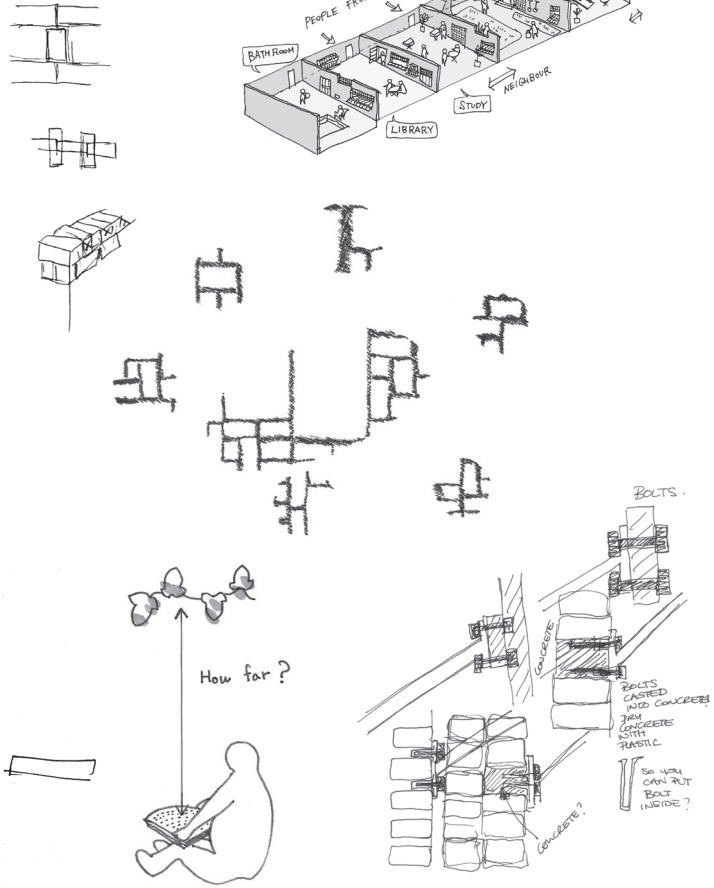
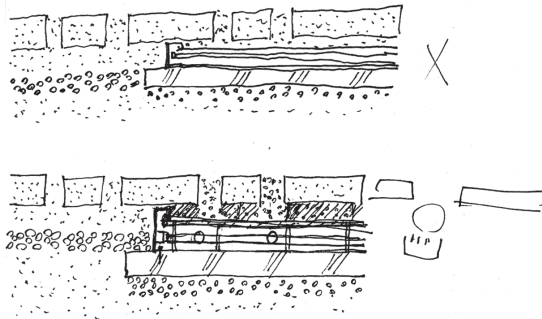
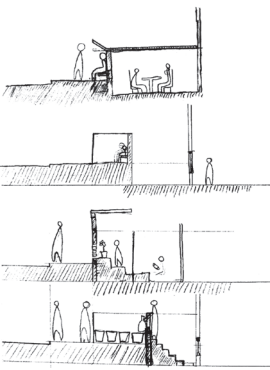
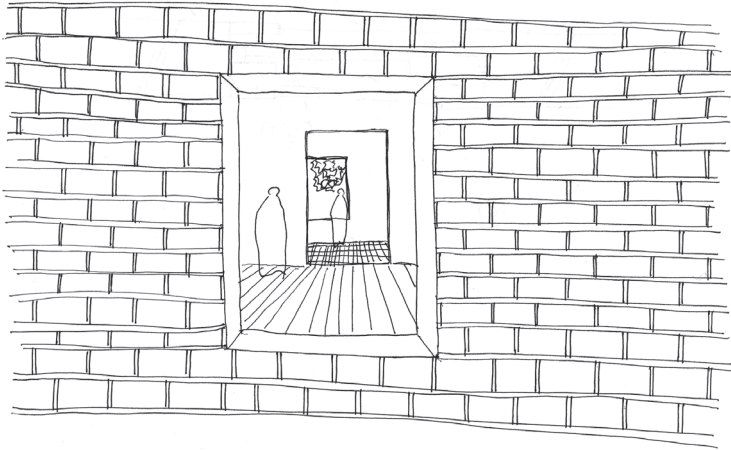


# Toh Shimazaki Architecture Forum 2007

## Information



### Programme

April 2007:  
Application is open to participants

June - July 2007:  
Interviews and Decisions on study topics to be made

1st August - 7th September 2007:  
The Workshop

Activities including, Introduction, Tutorials, Office Visit, Site studies, Investigations, Dialogue with Toh Shimazaki staff, Crits, Production of 3D drawings, Final Presentation, Feedback process and Work on the book.

### Assessment

All students' work will be followed by regular weekly tutorials. There will be tutors who will support the participants through the entire course. The workshop will run as a small group and all students will discuss their work with the others. The work at the forum will be assessed by the tutors and the members of Toh Shimazaki Architecture as well as the external professional visitors in a group crit presentation.

Elements of the brief for the research will be based on the 'live' situation of projects undertaken by the practice (t-sa). A London site, which Toh Shimazaki Architecture is working on will be given to each student. A client will be asked to be involved with the briefing and the crit.

There will be a two-way critic and debate exercise with the members of the practice who are working on the projects. The consultants, such as Structural engineers will also join the debate and assessments. The participants will be given the opportunity to discuss and test their ideas and research topics with the practice members, external designers and the consultants.

It is hoped that opportunities to experience a practice atmosphere at Toh Shimazaki Architecture and other offices will be encouraged. The forum will be conducted in English.

### Note

Students are required to provide their own working materials including models, computers and drawing tools. Minimum of 15 students must enrol before this workshop can take place.

Students should have minimum conversational English in order to get the most of the summer Workshop. However you must also have good communication skills through other means such as drawings, models, photography and computers.

### Accommodation

Generally, students will need to find their own accommodation for the workshop period. Please try to book

these early. t-sa-forum may have suggestions for reasonably priced accommodation.

### Note

t-sa-forum has taken every care to ensure accuracy of the course described. However, changes may be introduced after this publication. Prospective participants should be aware of this and are invited to discuss the details by inquiry to t-sa forum. t-sa reserves the right to make such changes as may be appropriate for reasons of operational efficiency or due to unforeseen circumstances.

All costs other than that for the course fee will be covered by the individual student. See also t-sa-forum Terms & Guidance.

### Application

All applications must be made to Toh Shimazaki Architecture Forum. Please send an email to us at [forum@t-sa.co.uk](mailto:forum@t-sa.co.uk) including the following information.

- Your CV
- Completed Application form
- No more than A4 letter stating your interest and why you would like to do the course.
- Small PDF version example of your work. No more than 3 pages

Suitable applicants will be interviewed. Please send your

applications no later than 18th June 2007.

Applications made after this date may still be considered depending on the places available. This year 16-20 places are available. The interview process will start in 23rd April 2007 and places will be given to suitable students. Early applications would therefore be advisable.

### Fee

£1,200 per student covering the tutorials for 6 weeks, visiting and evening lectures, evening debate series, presentations and site visits as part of the tutorials. The studio space for each participant is also provided.

### Scholarship

There are 2 places for a full scholarship awarded by Toh Shimazaki Architecture. Applicants will be interviewed by the Directors of Toh Shimazaki Architecture for this award. There are also other scholarship available subject to interviews.

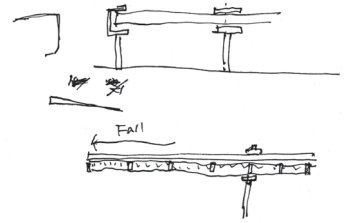
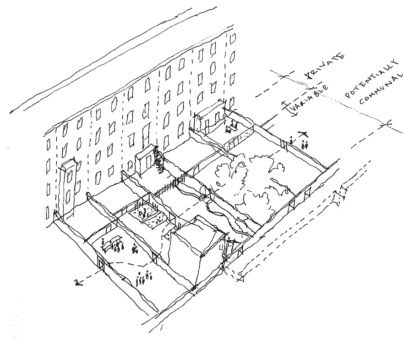
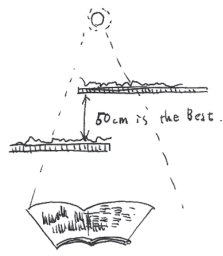
### Intellectual property

The participants to this year's Toh Shimazaki Architecture Forum must agree that the intellectual property, ideas and materials produced by the participants belong to Toh Shimazaki Architecture Forum.

the present situation : 現状

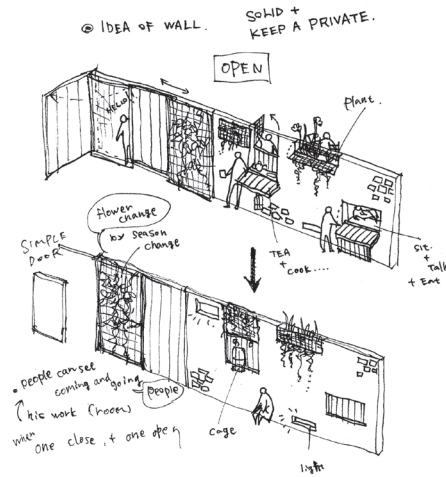
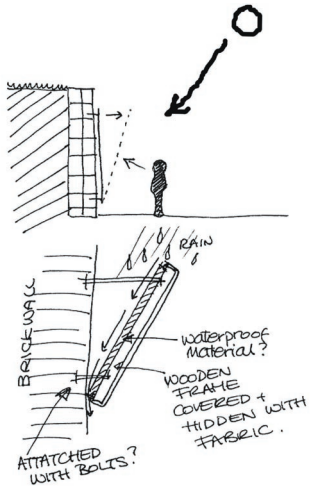
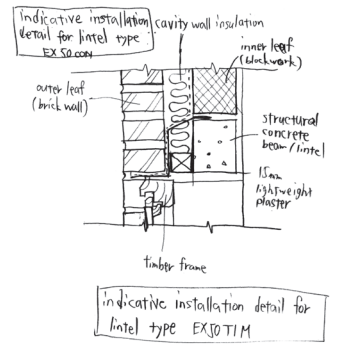
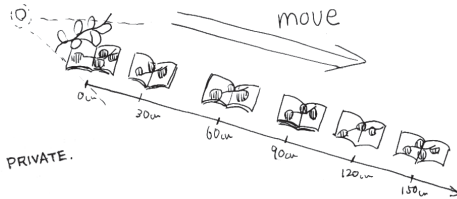
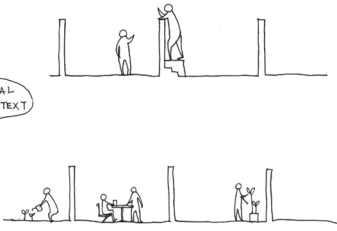
connect : 繋がる

appear : 現れた



A WALL TO DIVIDE EACH GARDEN.

MATERIAL = CONTEXT  
MATERIAL = CONTEXT  
MATERIAL = CONTEXT



## Visiting Professionals

**Yuli Toh & Takero Shimazaki**  
Architects  
Toh Shimazaki Architecture  
www.t-sa.co.uk

Toh Shimazaki Architecture is a London based studio founded by Yuli Toh and Takero Shimazaki in 1996. The directors have worked in the international practices of Richard Rogers Partnership, UK and Itsuko Hasegawa Atelier, Japan.

They aim to create timeless architecture by seeking spatial solutions with integrity and lasting meaning to its users.

**Anna Mansfield**  
Toh Shimazaki Architecture

**Tomoyo Arimoto**  
Toh Shimazaki Architecture

**Ana Araujo**  
Architect  
PhD researcher and tutor at The Bartlett School of Architecture

Ana trained Architecture and Architectural Theory and History (Msc) at the Federal University of Minas Gerais (UFMG), Brazil. She was a partner at AR Architects from 1998 to 2002, where she worked with architectural design, scenography, costume-making and interior design.

Currently registered as a research student at the Bartlett, UCL, Ana's work is concerned with the

spatialisation of pattern design, cutting across the fields of architecture, fashion and textile design. In her architectural work, Ana is particularly interested in the use of soft materials such as fabric and other woven surfaces combined with computer aided techniques of modeling (cadcam) and laser cutting.

Ana has recently shown her work in exhibitions in Berlin, Amsterdam, London and Belo Horizonte (Brazil)

**David Phillips**  
Architect  
Previously at office of John Pawson

David grew up in Surrey and Wales. He studied fine art at Maidstone College of Art and the Royal College of Art. For ten years he practised as an artist and graphic designer. Subsequently he studied architecture at London South Bank University. Since 2000 he has taught environmental information design at the University of the Arts London. He is interested in the nature, construction and use of buildings.

'I am intrigued by the things that are 'soft', the junctions and understandings between differences, the cooperation of materials, the ephemeral that is almost ordinary. I like the honest work of hands.'

**Patrick Lynch**  
Architect  
Lynch Associates London  
Winner of Building Design Young Architect of the Year 2005  
www.lyncharchitects.co.uk

Patrick was born in Henley-on-Thames, Oxfordshire, England. His teaching experience includes, 2005-present, London Metropolitan University Undergraduate Studio 4, 2001-2003 A.A. Unit Master Intermediate Unit 1 and 1997-2003 Kingston University Diploma Unit Master & Senior Lecturer.

He has been running his own practice since 1997, LYNCH ARCHITECTS.

**PUBLICATIONS & AWARDS:**  
Lynch architects are Young Architects of the Year. Their work has been published in the international architectural press and the national press here. We have been part of exhibitions in Europe and America. Patrick Lynch has published various book chapters and essays in refereed journals.

**Sergison and Bates**  
Architects  
www.sergisonbates.co.uk

**Lorenzo Wong**  
Architect  
Alison and Peter Smithson

**Shin Azumi**  
Product designer  
www.shinazumi.com

Product designer Shin Azumi studied MA at Royal College of Art, UK. In 1995 he started working as a design unit AZUMI in London. Since then, he has been designing product, furniture and interior for European and Japanese clients. In 2005, he established his

individual design office, a studio, and started working as solo. He won numerous design awards including FX International Design Award, Product of the Year 2000.

**Adam Cowley**  
DJ, Architect and Lecturer and Course Organiser at School of Architecture, Oxford Brookes University

**David Crookes**  
Structural Engineer  
Fluid Structures, London

**John Parker**  
Contractors  
Dale Contracts  
www.dalesltd.com

**Junko Fuwa**  
Graphic designer, Former art director, Blueprint Magazine UK

Junko Fuwa studied French literature at Gakushuin University in Japan before moving to London in 1992. After graduating from Royal College of Art with the MA in graphic design, Junko worked in a design consultancy in Soho, London. In 2000, she joined Blueprint, the UK's leading design and architecture magazine, where she had been art director for six years. Junko is a regular contributor for Dazed & Confused and Fashion Week, as well as is UK editor for +81, a Japanese bilingual visual culture magazine. She is also a fellow of RSA.

**Kevin Bonfield**  
Quantity Surveyor, Bonfield Ltd.